

# VisionMax Quick start Guide

VisionMax is the background measurement system of Sprint, Gemini and EVO. It will be responsible for presenting and collecting all the information of the front-end Device, and providing a setting interface to allow users to control the system setting information.

Follow this manual step-by-step to operate the VisionMax system

The following steps are divided into

- (1) login
- (2) General operation settings
- (3) System maintenance

**Append A : Format SD Card**

**Append B : Install Device Position**

**Append C : APN Setting**

## (1) 、Login

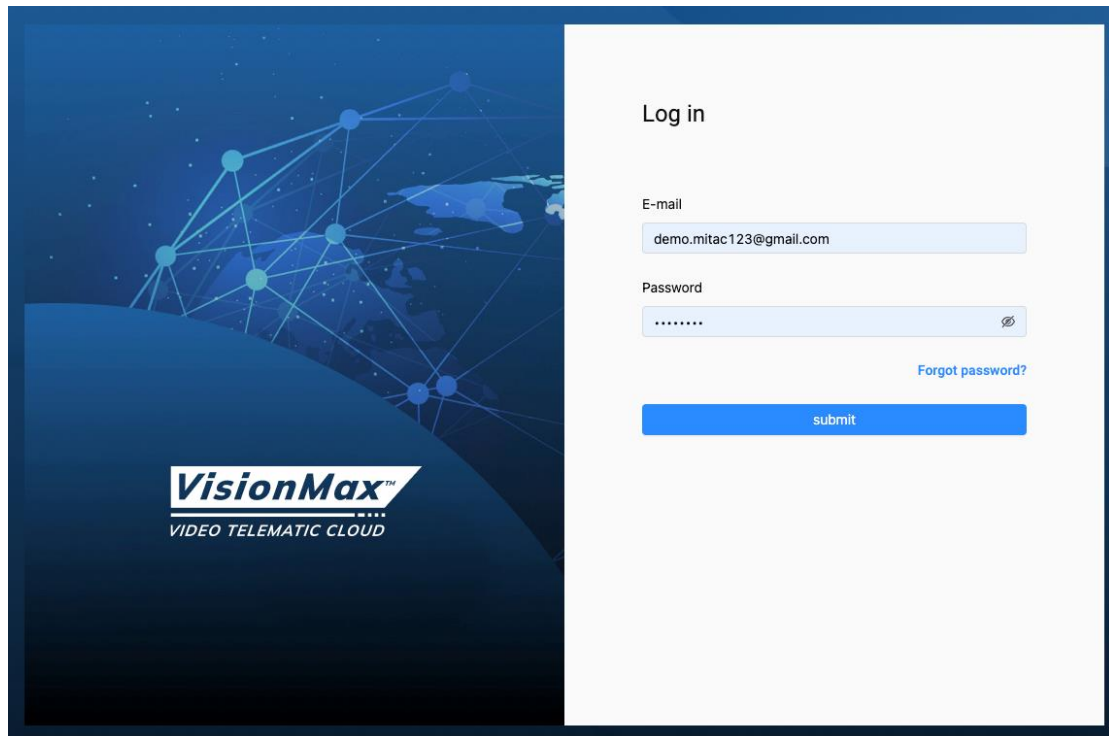
### a. Login Page

Linking VisionMax Link :

<https://dev.visionmaxfleet.com/login>

Login account: The account provided in the verification letter is the login account

Password: authentication letter is imported into the website for the first time



Log in

E-mail  
demo.mitac123@gmail.com

Password  
.....

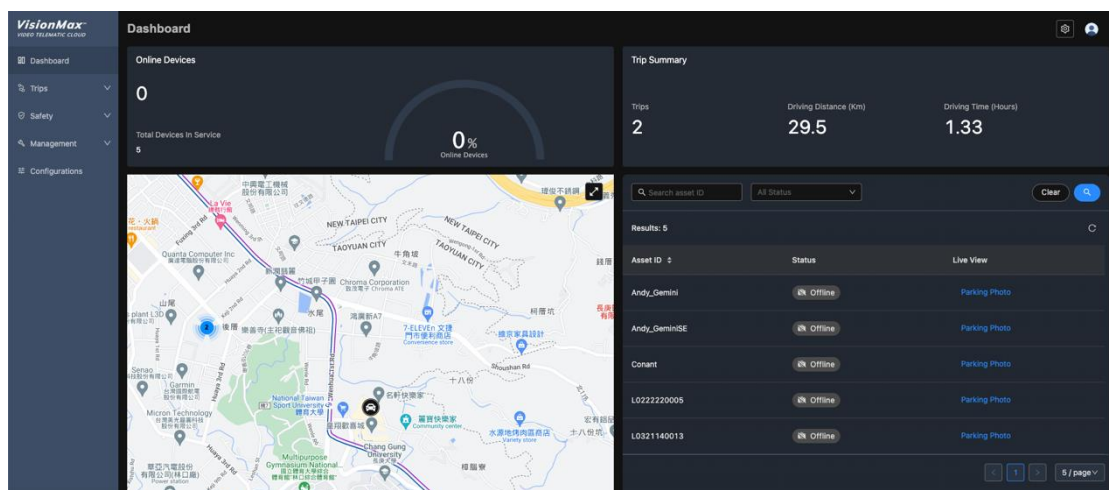
[Forgot password?](#)

submit

**VisionMax™**  
VIDEO TELEMATIC CLOUD

### b. Display screen after login

When this screen is displayed, the login is successful



**VisionMax™**  
VIDEO TELEMATIC CLOUD

Dashboard

Online Devices  
0  
Total Devices In Service  
5

0%  
Online Devices

Trip Summary

Trips: 2  
Driving Distance (Km): 29.5  
Driving Time (Hours): 1.33

Search asset ID: All Status

Results: 5

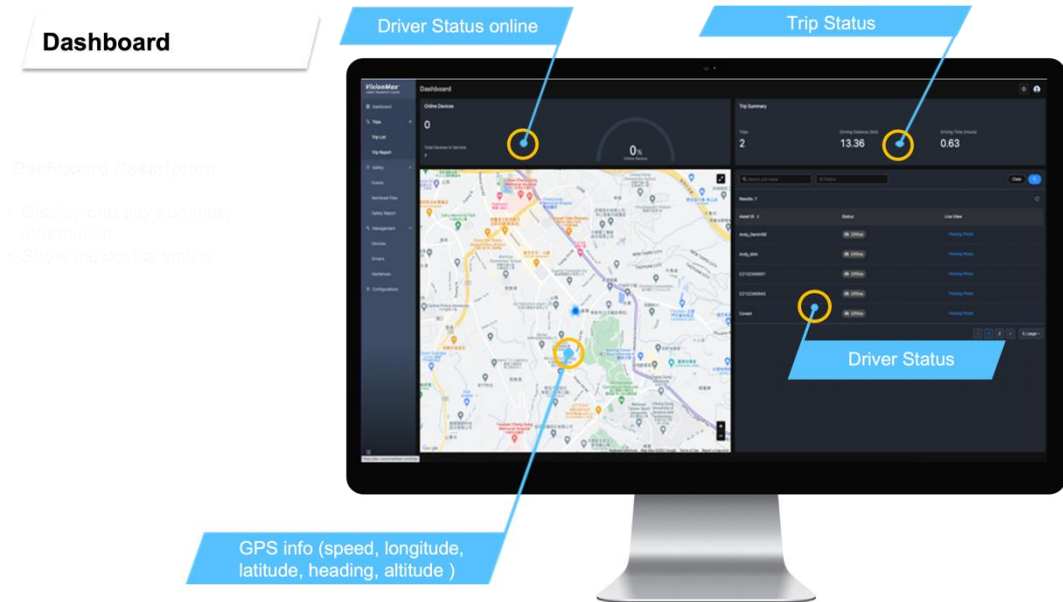
Asset ID	Status	Live View
Andy_Gemini	Offline	Parking Photo
Andy_GeminiSE	Offline	Parking Photo
Conant	Offline	Parking Photo
LO222220005	Offline	Parking Photo
LO321140013	Offline	Parking Photo

5 / page

## (2) 、 General Operation Settings

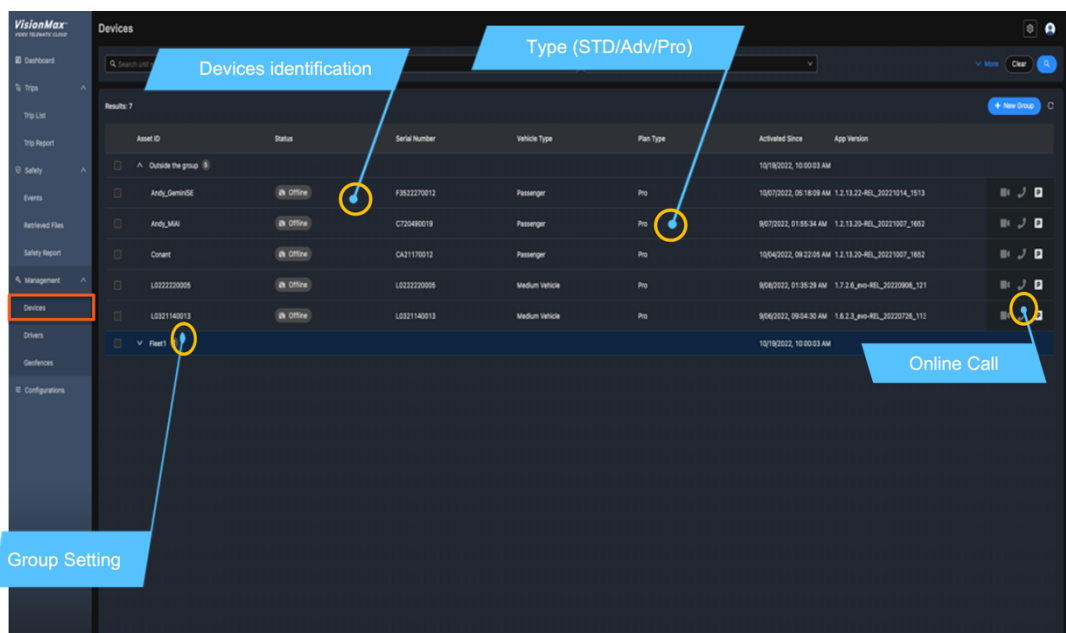
### a. Dashboard

Display the system information of the current day, including the trip, mileage statistics of the day, and the offline or online status of the equipment

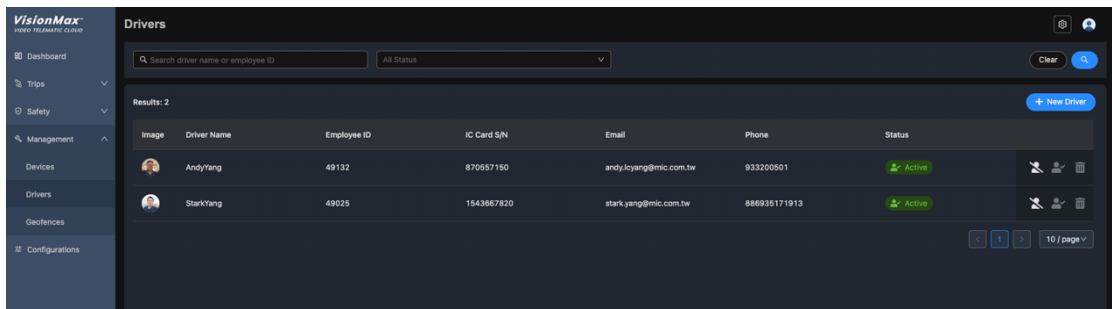


### b. Management

Device: Display the device status and settings, and check whether it is registered and whether it is Online (must be powered on)

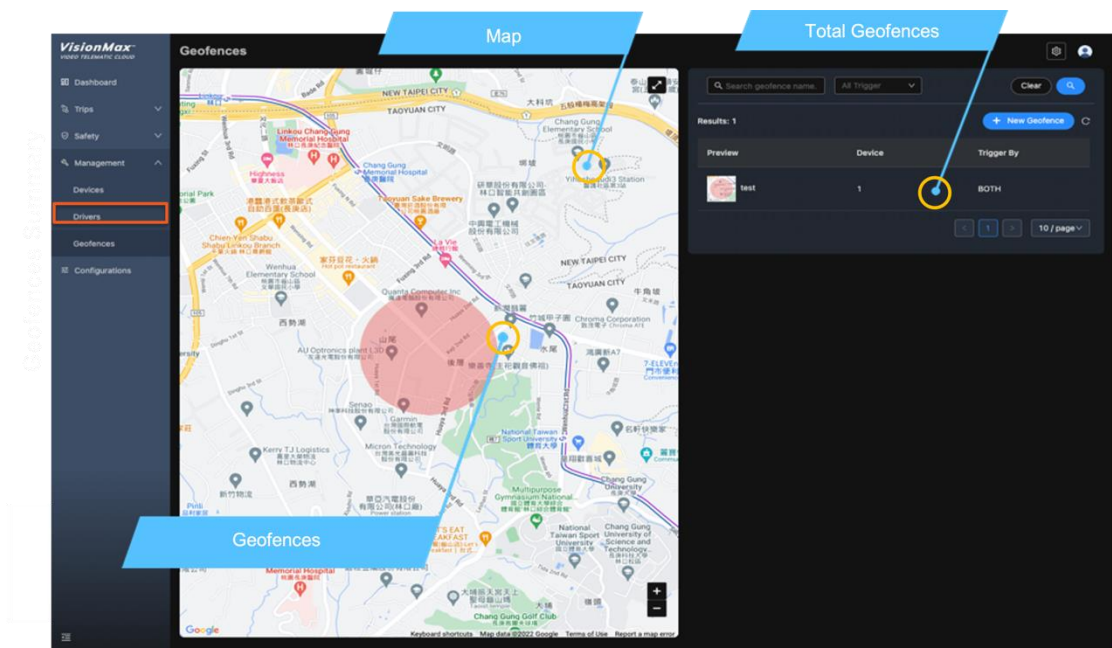


Driver: Driving behavior analysis (Driver Account must be established first)



c. Geofences :

Safety fence (must build relevant settings first)



#### d. Configuration

The setting value of the system, the current system includes Default Setting

3 Category events

Impact Event Description

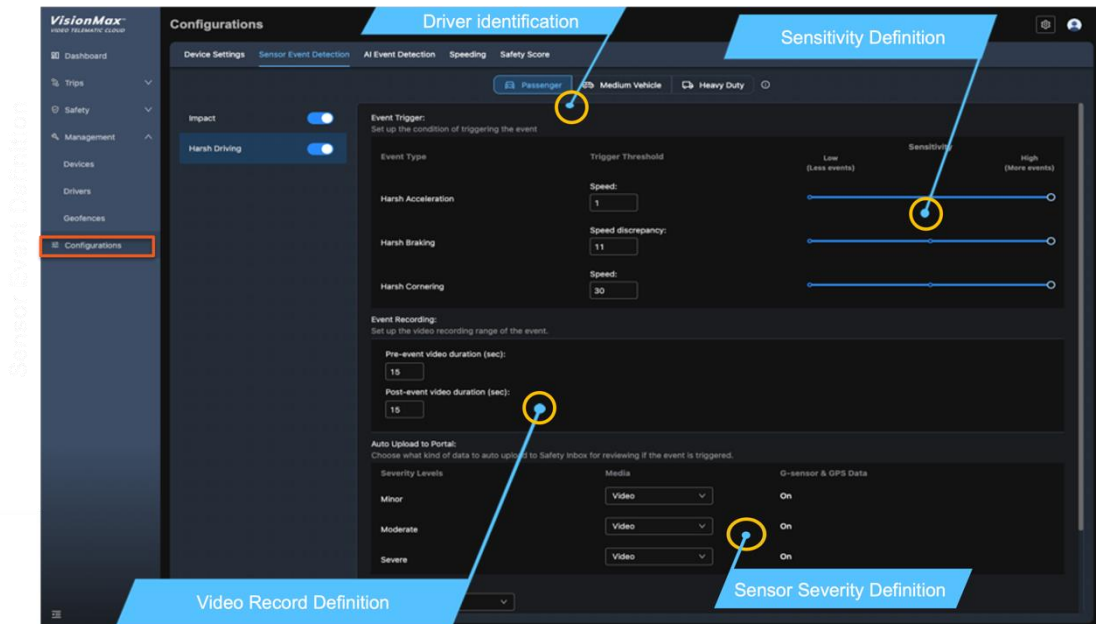
- Impact event

Harsh Event Description

- Harsh Acceleration
- Harsh Braking
- Harsh Cornering

AI-ADAS-DMS Event Description

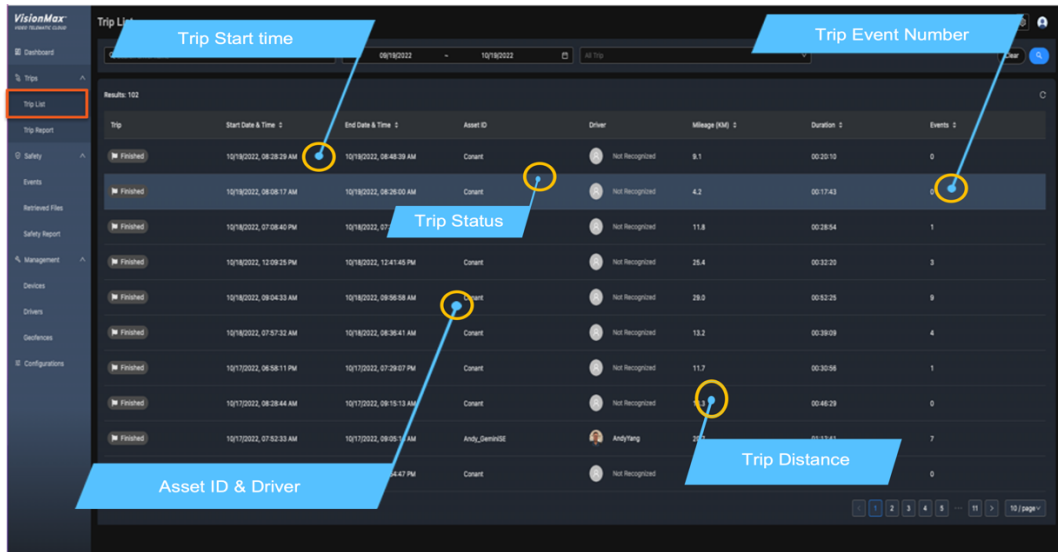
- Frontal Collision Warning
- Tailgating
- Land Departure
- Stop and Go
- Distraction
- Phone Usage



e. Trip

Trip statistics

Displays the status of the Trip (you must drive to make the Trip first)



Trip Statistics : provide

MMF (Mobility Map Function) --- Depend on region, now supporting US,AUS

- Display Over speed limit trip
- Calculate Over speed limit Data
- Alert validation drive action

Safety Alert --- Depend on region, now supporting US,AUS

- Speed Cam Alert
- Stop Sign Alert
- School Zone Alert

**Traffic Investigation**

MMF (Mobility Map Function)

- Display Over speed limit trip
- Calculate Over speed limit Data
- Alert validation drive action

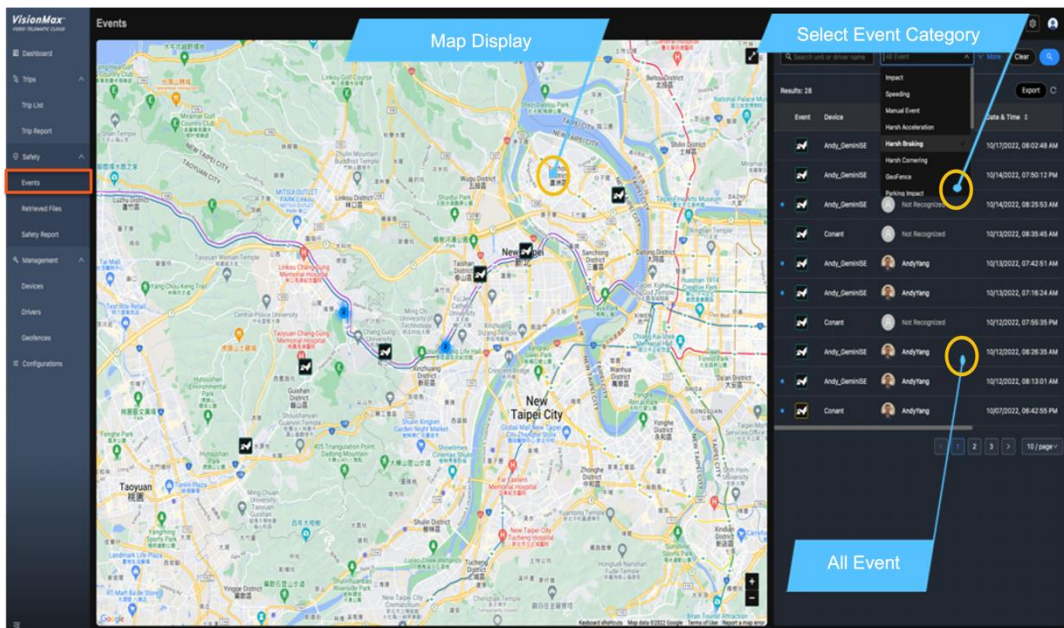
Safety Alert

- Speed Cam Alert
- Stop Sign Alert
- School Zone Alert



f. **Safety**

Classification of system events, showing system events and driving safety scores (must have a driving event first)



(3) 、system maintenance

After the above operations, if all can operate normally, you can start to use the system normally.



## Append A: SD card format

If you get the device without an SD card, you can format the SD card first by following the steps below, otherwise you will hear the SD card Error voice when you turn it on.

### Steps

1. Insert SD card
2. Wait for 30 seconds (the SD Card Error voice will be heard during this time)
3. Press and hold the Button for 10 seconds, then press it again immediately after releasing it (you will hear the voice SD Card formatting, Please wait)
4. Wait for 30 seconds and you will hear format completed
5. Done, SD card can be used normally



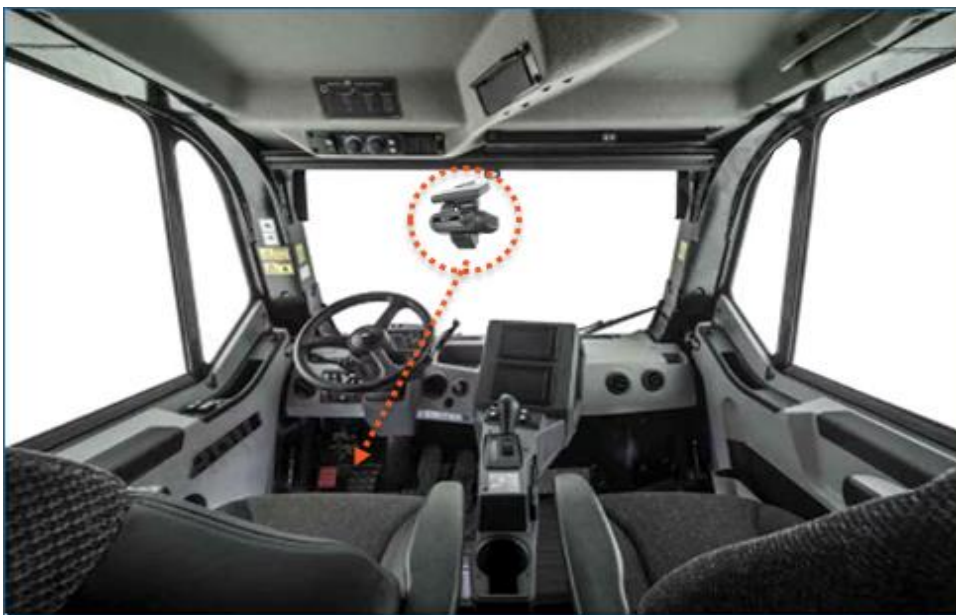


## Append B : Device position Install

The adjustment of the device installation position needs to be done through the APP. Through the APP, you can see the current lens position. Because AI must be calibrated, this step is necessary for the first installation.

Steps :

### 1. Product Installation



The inner mirror is aimed at the driver and the outer mirror is aimed at the skyline (explained later)

2. Power on the device

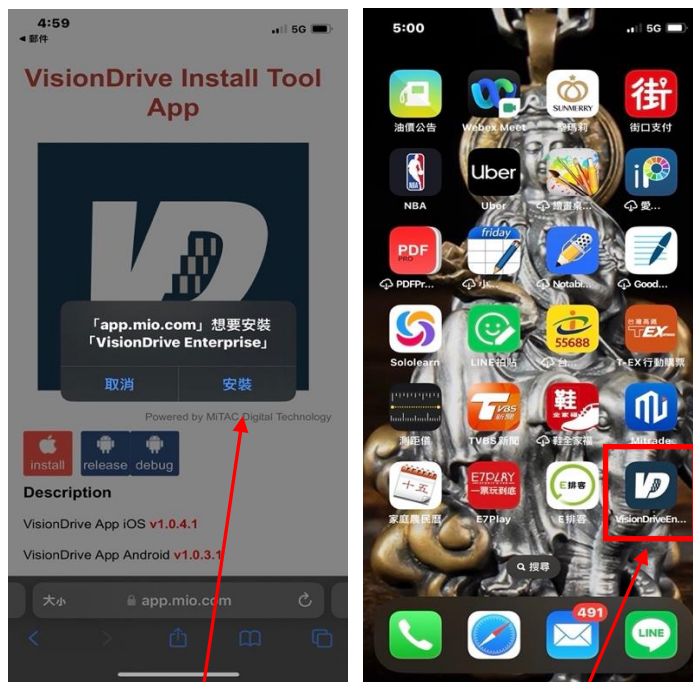


cigarette lighter power

3. Install the calibration software

For iOS 1.0.3.1 AOS, Push the link in the iOS for installation

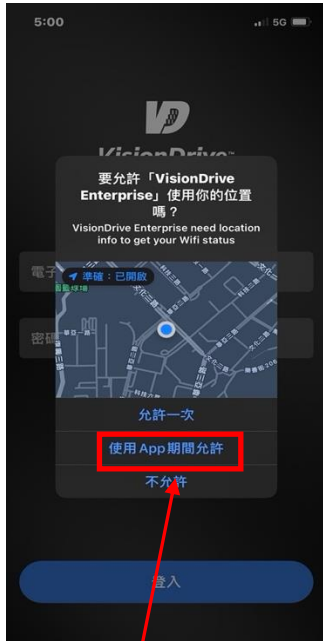
<https://app.mio.com/mdt/App/VisionInstallTool/>



Install Software

Select Software

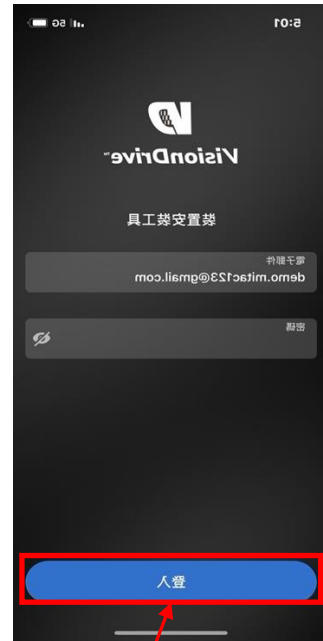
4. Open the calibration software



Allow Location



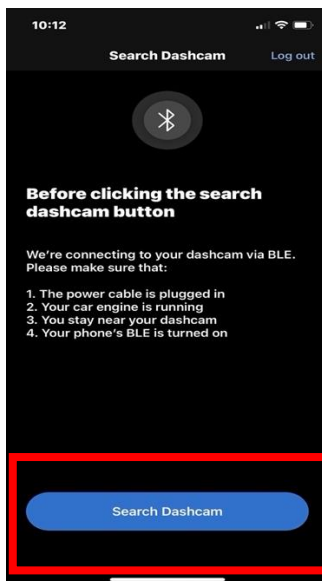
Use BlueTooth



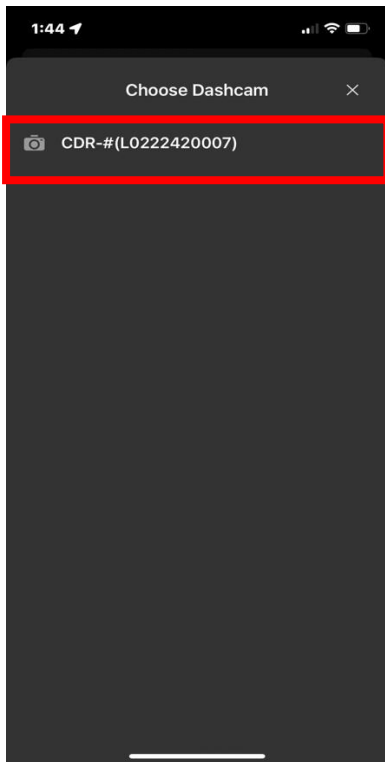
Login

5. Enter the account/password (same as the opened account/password)

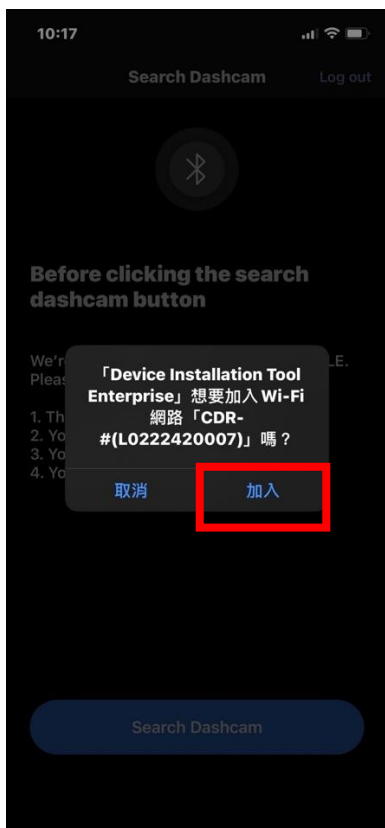
6. Enter the function screen → Select “Search Dashcam”



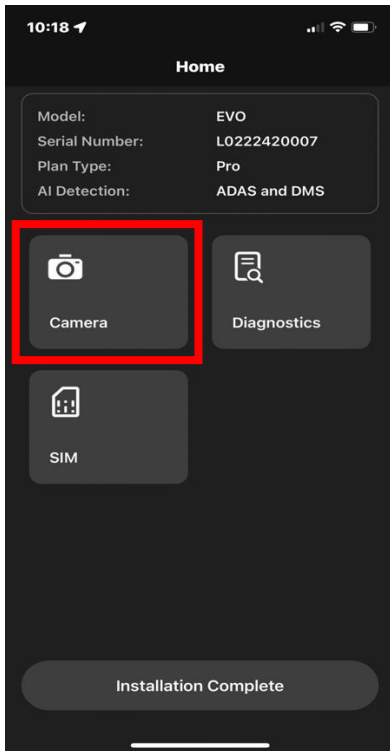
Main function page



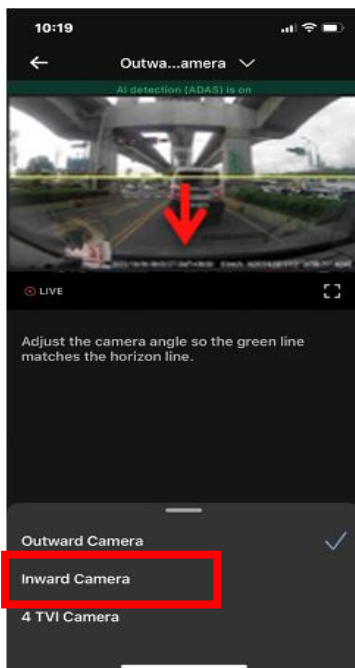
Go to select device page › Select device



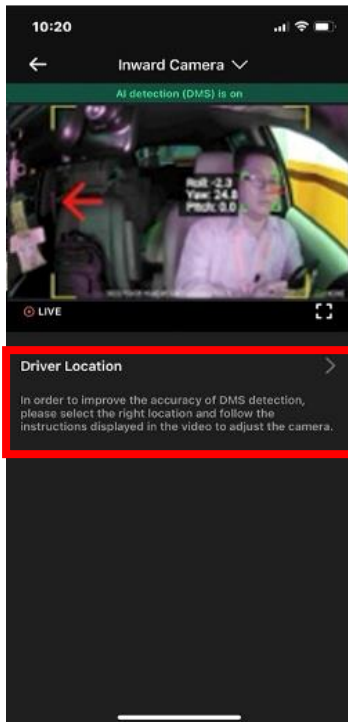
Select “加入”



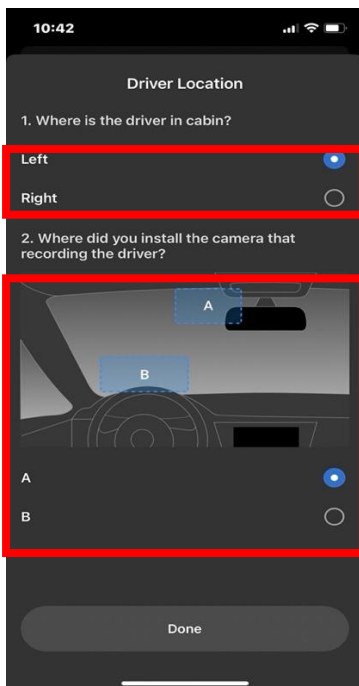
Enter the setting page, select Camera, enter the setting screen



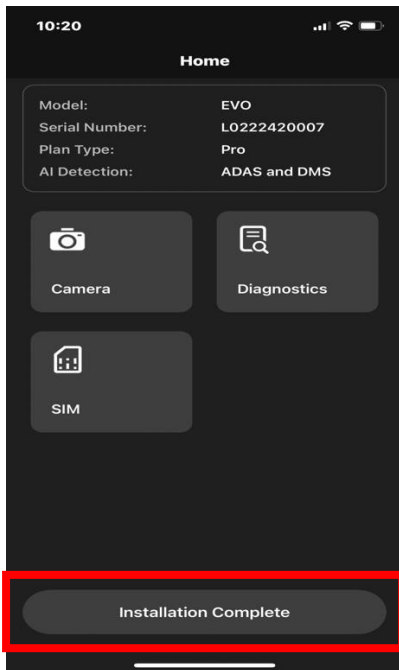
Set the front camera, click the box to set the rear camera and other cameras



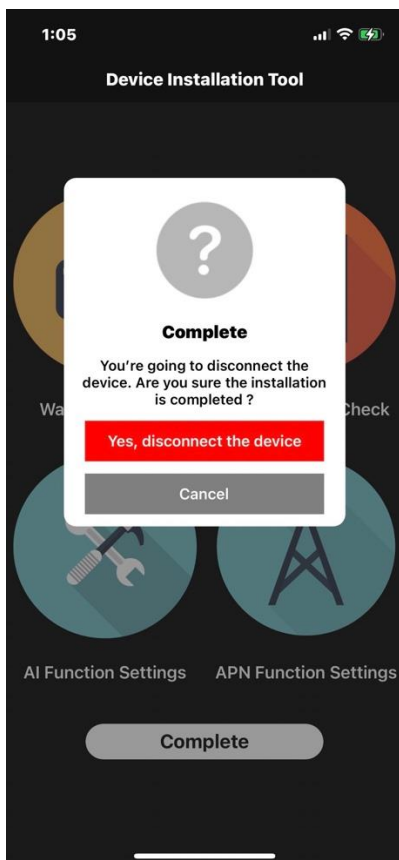
設 Set the rear camera, then click to set Driver Location



- a. Set left and right driving
  - b. Set the device installation location
- Completed select done



Select "Installation Complete"



complete adjustment

7. Follow the steps above to complete the installation



## Append C: Setting APN

When the problem of Telecom APN setting causes the network to fail, you can follow the steps below

Steps:

1. Install the calibration software

For AOS, iOS 15.3 and before

<https://iosapp.mic.com.tw/App/CDRInstallTool/>

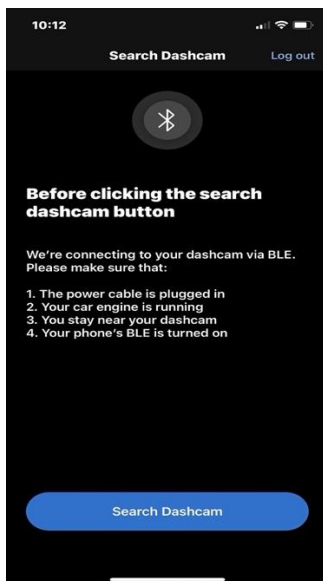
For iOS 15.4 and later

<https://cp.mitacdigitech.com/APP/CDRInstallTool/>

2. Open the calibration software

3. Enter account/password (same as the opened account/password)

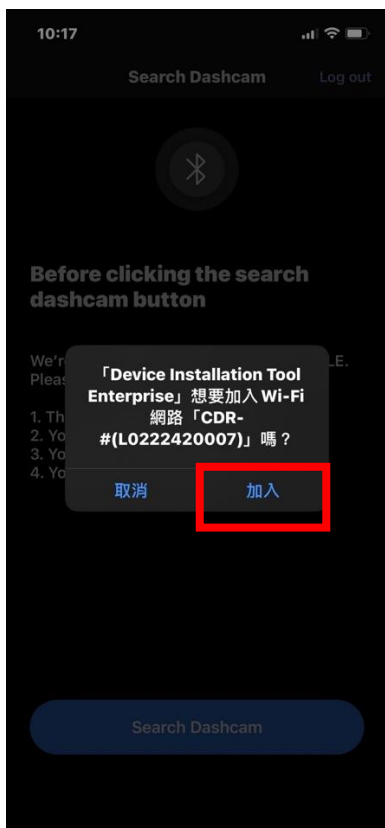
4. Enter the function screen



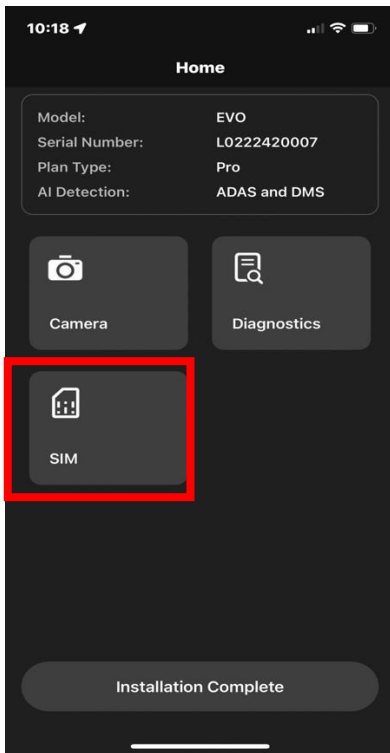
Main function page



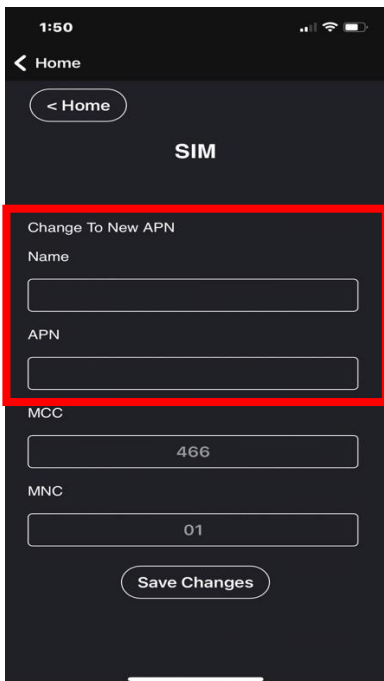
Go to select device page › Select device



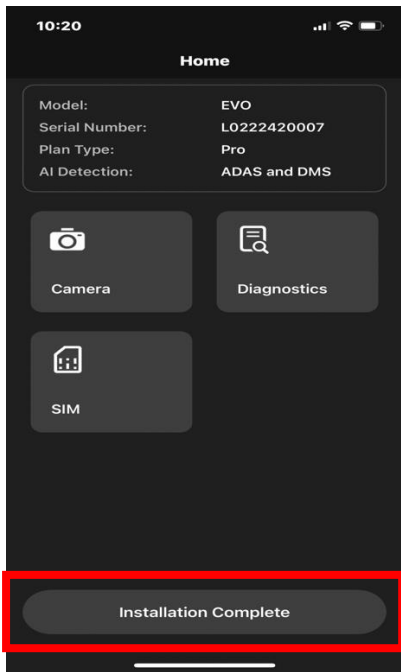
Select “加入”



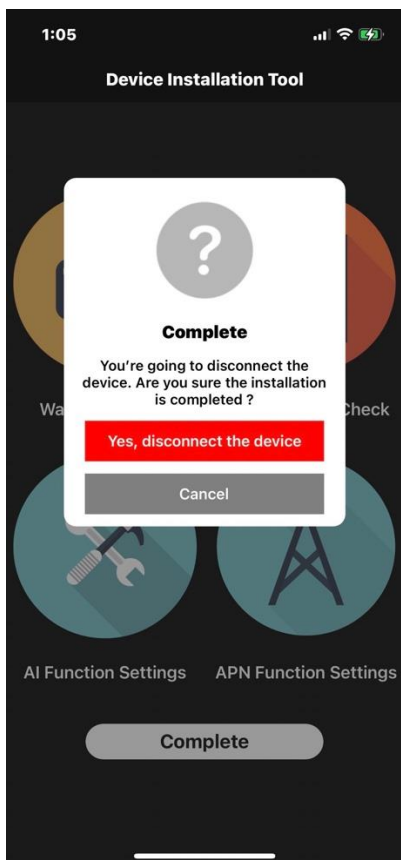
Enter the setting page, select SIM, enter the setting screen



Enter relevant information  
Select "Save Changes"



Select "Installation Complete"



complete adjustment