

## Intelligent Video Telematics Solution

All your needs are just Simple as is!

# K220



K220 is an all-in-one 4G LTE connected digital camera solution. K220 can help fleet managers evolve from tracking only technology to the new video telematics era. Built in with powerful Qualcomm® processor and Andorid™ Platform, it not only provides powerful performance, but also flexibility with a suite of APIs & SDK for system and cloud integration. High speed 4G LTE allows remote live view to ensure operators have full awareness over the whole fleets. K220 also equips dual full HD cameras which provide both forward/ in-cabin non-stop recording while vehicle is on operation. The tamper-resistant and industrial-grade design make the K220 as trusted solution.



### Always connected

- Built-in 4G LTE Cat.6 & dual-band WIFI
- Over-the-Air firmware & setting updates
- Bluetooth® 4.2 BLE



### Get the full picture of your vehicles

- ECU integration to acquire vehicle and engine telematics data \*
- All video footage are safely stored both on the SD card and Cloud
- Enhanced ADAS and DMS function



### Reliable and flexible platform

- Qualcomm® Octa-core & Android™ 9.0
- Open APIs & SDK for seamless integration with fleet management solutions



### Affordable Solution

- Cost-Effective configuration
- Compact design. Simple as is



### Track your fleets in real-time

- Comprehensive satellite tracking
- 3-axis G-sensor and Gyro support

\* Only when equipped with Smart Cable

## DETAILED VIEW



**4G LTE / WIFI  
INDICATOR**



**INWARD CAMERA**

Full HD 1920 x 1080 pixels  
Wide 142° FOV  
IR for low light visibility

**WINDSHIELD  
MOUNTING**

Easy to install in minutes

**ALL-IN-ONE  
CONNECTOR**

Connect to vehicle battery  
Optional ECU integration

**CABLE COVER**

**USB CABLE**

For data transfer and external  
camera connection

**EMERGENCY  
RECORDING BUTTON**

Manually press button to  
protect the clip from being  
overwritten

**FORWARD CAMERA**

Full HD 1920 x 1080 pixels  
Wide 142° FOV

**MICRO SD**

Storage up to 512GB

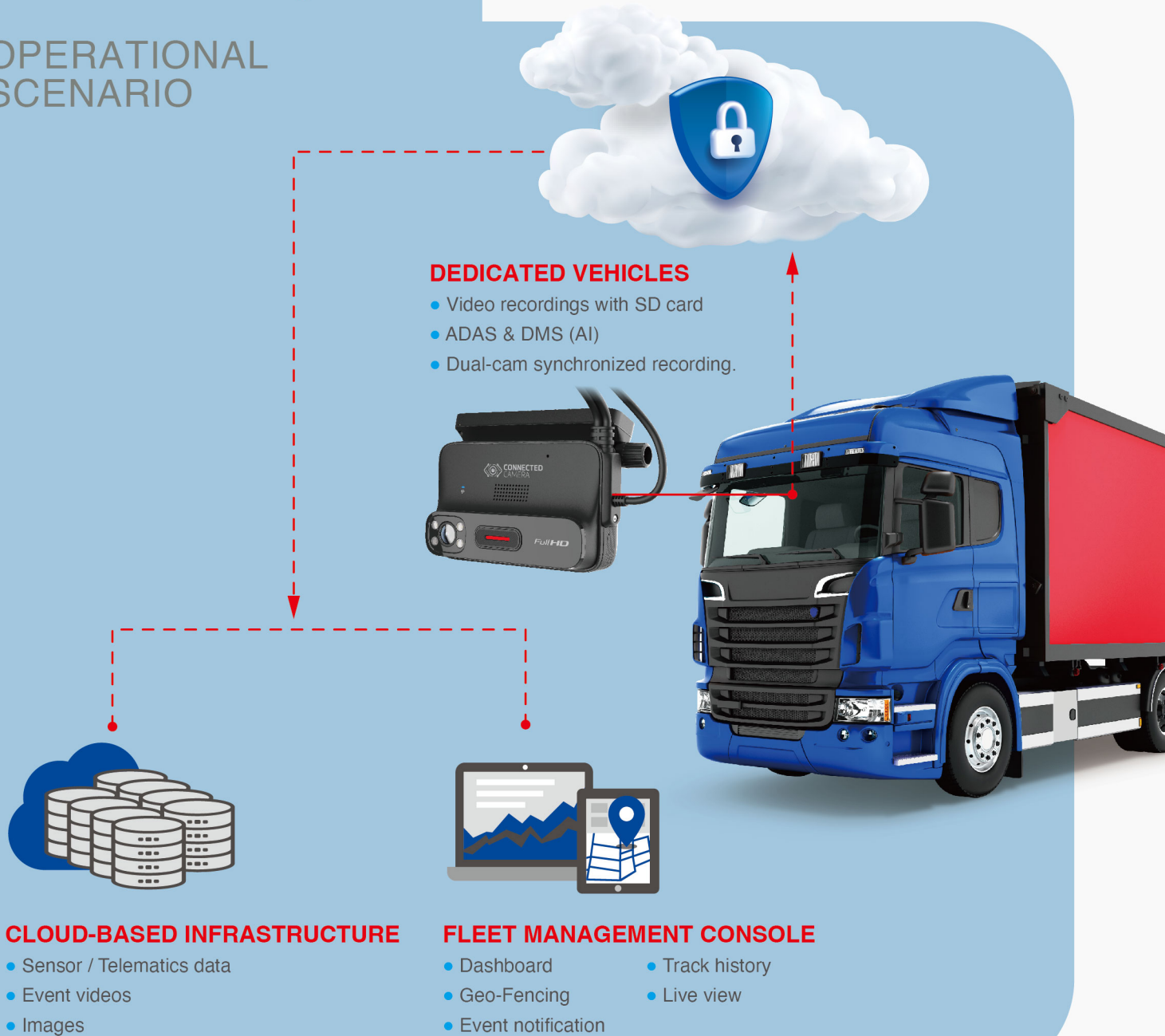
**TAMPER PROOF  
COVER**

Prevents any unauthorized  
removal






**NANO SIM**

LTE Cat.6  
(3G/2G fallback)

## OPERATIONAL SCENARIO



## ACCESSORIES

<p><b>OBD POWER CABLE</b></p> 	<p><b>ENTRY CABLE</b></p> 	<p><b>SMART CABLE</b></p> 	<p><b>EXTERNAL CAMERA</b></p>  <p>Optional camera connected via Mini USB.</p> <ul style="list-style-type: none"> <li>• A50 rear camera</li> <li>• i15/ i25 DMS/ in-cabin camera</li> <li>• USB waterproof camera</li> </ul>	<p><b>PANIC BUTTON</b></p> 
<p><b>Standard accessory</b> PN: 422N70300003</p>	<p><b>Sold separately</b> PN: 422N70300002</p>	<p><b>Sold separately</b> PN: 422N70800003</p>	<p><b>Sold separately</b></p>	<p><b>Sold separately</b></p>

## SPECIFICATION



<b>Platform</b>	Qualcomm® Snapdragon™ SDM450 Octa core, 1.8GHz
<b>OS</b>	Android™ 9.0
<b>Memory</b>	2GB RAM / 16GB internal storage
<b>Expansion</b>	MicroSD slot (up to 512GB support)
<b>Wireless Interface</b>	IEEE 802.11 a/b/g/n/ac (2.4GHz & 5GHz) Bluetooth® 4.2 BLE GPS, QZSS, GLONASS, Galileo  <b>EMEA &amp; Australia</b> <ul style="list-style-type: none"> <li>• LTE FDD Band 1/2/3/4/5/7/8/20/28;</li> <li>• LTE TDD Band 38/39/40/41;</li> <li>• WCDMA Band 1/2/4/5/8;</li> <li>• GSM 850/900/1800/1900MHz</li> </ul> <b>North America</b> <ul style="list-style-type: none"> <li>• LTE FDD Band 2/4/5/7/12/13/14/17/25/26/66/71;</li> <li>• LTE TDD Band 41;</li> <li>• WCDMA Band 2/4/5"</li> </ul>
<b>Sensors</b>	3-axis Accelerometer, 3-axis Gyro
<b>Camera</b>	Forward: FOV: 142.8°, H: 120.4°, V: 63.8° (±5%) Full HD 1920 x 1080 @ 30fps (configurable) Inward (IR): 142.8°, H: 120.4°, V: 63.8° (±5%) Full HD 1920 x 1080 @ 30fps (configurable)
<b>Physical Interface</b>	MicroSD slot (up to 512GB capacity) NanoSIM slot (SIM 1) and eSIM** (SIM 2) Mini USB x1 (supports external cam, USB type) Built-in mic x1 Built-in speaker x1
<b>All-in-one Connector</b>	12~32V power input, IGN power on signal input (H active, 7~32V) GPIO Input x 1 (Default)/ GPIO Input x 3 + Output x 1 (Option)
<b>Buttons</b>	Emergency recording button
<b>LED Indicators</b>	Recording, WiFi/LTE active
<b>Battery</b>	5F SuperCAP (approx. 12 secs backup power supply for video clips saving)
<b>Power Consumption</b>	Full run mode: 4.6W (12V/ 380 mA) Parking mode: 48mW (12V/ 4 mA)
<b>Boot Up Time</b>	Cold boot: 30s; Resume from parking mode and start recording: 2s
<b>Parking Mode</b>	With impact detection
<b>Environment</b>	-20° to +60°C (-40° to +140°F) operating temperature -20° to +70°C (-40° to +158°F) operating temperature (under certain conditions) -30° to +85°C (-22° to +185°F) storage temperature
<b>Certification*</b>	CE, CB, FCC/IC, UKCA, BQB, PTCRB, WEEE, ROHS, AT&T Network Ready, AWS, BIS
<b>Warranty</b>	12 months (extended warranty available)
<b>Weight</b>	205g
<b>Dimensions</b>	112 x 70 x 47.9mm

### Box contents\*

- Fleet connected camera
- Quick start guide
- Windshield mounting kit
- Standard with OBD power cable
- Cable cover

\* Region Dependent \*\* Optional